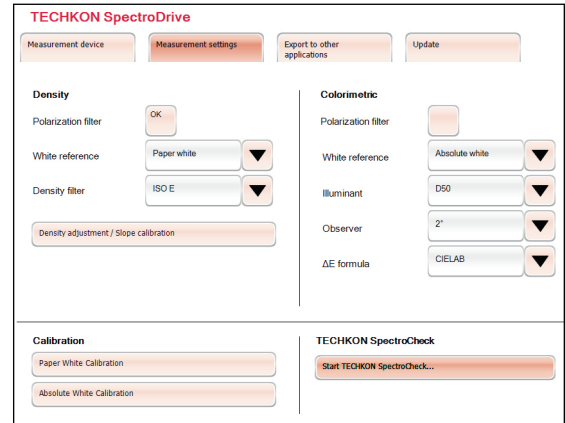
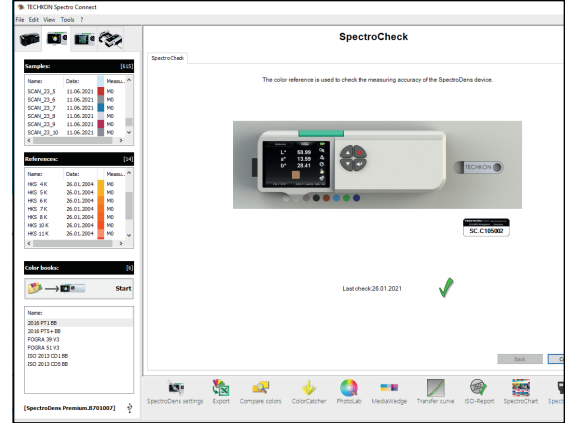




TECHKON SpectroCheck



## TECHKON SpectroCheck – Color Reference for SpectroDens, SpectroJet and SpectroDrive

### The easy way to perfect color

TECHKON SpectroCheck is a color reference for checking the measurement accuracy of the color measurement devices SpectroDens, SpectroJet and SpectroDrive.

The eight colored samples of the aluminum plate consist of a color-stable, insensitive ceramic and are factory-referenced to color calibration data of the National Institute of Standards and Technology (NIST).

The digital color data and the application software are stored on the integrated USB flash memory.

For checking the color accuracy of the SpectroDens, SpectroJet and SpectroDrive device the Windows software TECHKON SpectroConnect is used.

The software is stored on the integrated USB flash memory of the SpectroCheck color reference. It can also be downloaded free of charge from the download area of [www.techkon.com](http://www.techkon.com).

In SpectroConnect the software module SpectroCheck will lead step by step through the check procedure. The result window

reports if the measurement device conforms with the technical specifications.

Optionally, the verification of the measurement accuracy can also be done with the Windows software TECHKON ExPresso (version 4.4 or higher).

To document the internal quality management, the test results can be printed out conclusively with all important data (e.g. serial number, quality representative and date).

### Specifications

Weight 670 grams  
Dimensions 12 x 90 x 290 mm  
(approx. 0.5 x 3.5 x 11.4 inches)

### Contents of delivery

- Color Reference SpectroCheck with USB flash memory
- Cleaning tissue-cloth
- Carrying case
- Short manual (pdf) on USB stick

### Accessories

- Compensation plate Spectro Drive